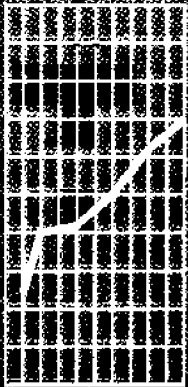




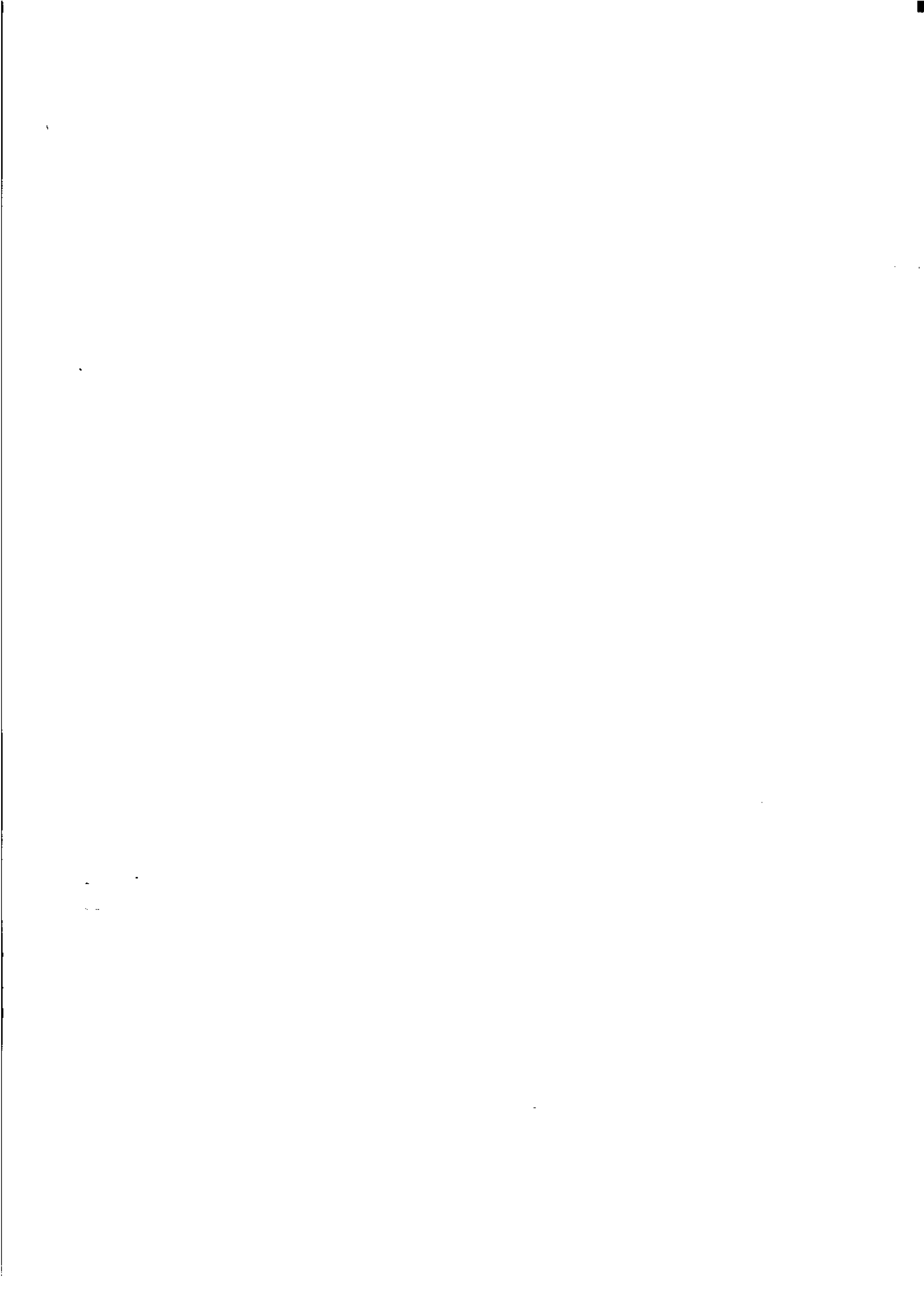
November 1995

# Monthly Summary of Statistics Western Australia



Statistics

Catalogue Number 1305.5



## CONTENTS

Table

Page

POPULATION	1.1	Estimated Resident Population	1
	1.2	Components of Population Change	2
	1.3	Registrations of Births, Deaths, marriages and Divorces	3
	1.4	Rates of birth, Deaths, Marriages and Divorces	3
TOURISM	2.1	Permanent and Long Term Arrivals and Departures	4
	2.2	Short Term Overseas Arrivals and Departures	5
	2.3	Short Term Arrivals by Air: Last Six Months	5
	2.4	Short Term Arrivals: Purpose of Journey	6
	2.5	Short Term Departures: Last six Quarters	7
	2.6	Short Term Departures: Purpose of Journey	8
	2.7	Tourism Accommodation	9
EMPLOYMENT	3.1	Labour Force Status: Seasonally Adjusted	10
	3.2	Labour Force Status: Trends	11
	3.3	Employed Wage and Salary Earners by Industry and Sector	12
	3.4	Average weekly Earnings of Employees	13
	3.5	Industrial Disputes Causing Stoppage at Work	14
RETAIL	4.1	Monthly Retail Turnover: Original Estimates	15
	4.2	Consumer Price Index: Perth	16
CONSTRUCTION	5.1	New Residential Building Approved	17
	5.2	New Non-Residential Building Approved	18
	5.3	Selected Housing Price Indexes: Perth	19
	5.4	Price Indexes of Materials Used in Building Other Than House Building: Perth	20
PRODUCTION	6.1	Livestock Slaughtered	21
	6.2	Meat Produced	21
	6.3	Wool Receivals	22
	6.4	Energy Production	22
	6.5	Mineral Exploration: Expenditure by Type of Mineral Sought	23
	6.6	Mineral Production	23
OVERSEAS TRADE	7.1	Imports by Selected Divisions	24
	7.2	Exports by Selected Divisions	25
TRANSPORT	8.1	Vehicle Registration Statistics	26
	8.2	New Motor Vehicle Registrations	26
FINANCE	9.1	Private New Capital Expenditure by Selected Industry Groups	27
	9.2	State Final Demand and Production Account	27
STATISTICAL SUMMARY	10.1	Key State Indicators	28

---

## INQUIRIES

- PHONE ■ For more information about these statistics and of related unpublished statistics, contact Information Services on (09) 360 5140
- MAIL ■ Write to or visit Information Services, Bureau of Statistics,  
Level 16, Exchange Plaza Building, 2 The Esplanade, Perth WA 6000
- ELECTRONIC ■ On Elderlink key \*620#  
■ On Dial-A-Statistic phone (06) 252 6017
-

**AUSTRALIAN BUREAU OF STATISTICS  
WESTERN AUSTRALIA  
NOVEMBER 1995 RELEASES**

*Catalogue*

<i>Number</i>	<i>Publication Title</i>	<i>Release Date</i>
8731.5	Building Approvals, Western Australia, September 1995	1 November 1995
8741.5	Dwelling Unit Commencements, Western Australia, August 1995	6 November 1995
1305.5	Monthly Summary of Statistics, Western Australia, November 1995	30 November 1995

**SYMBOLS AND OTHER  
USAGES**

The following symbols, where shown in columns of figures or elsewhere in tables, mean:

- n.a. not available
- n.e.i. not elsewhere included
- n.p. not available for separate publication (but included in totals where applicable)
- n.y.a. not yet available
- nil or rounded to zero
- .. not applicable
- \* Subject to sampling variability too high for most practical purposes.
- p preliminary - figure or series subject to revision
- r figure or series revised since previous issue
- break in continuity of series (where drawn between two consecutive figures or columns)

**ROUNDING FIGURES**

Where figures have been rounded, discrepancies may occur between sums of the component items and totals.

**P.C. Kelly  
Deputy Commonwealth Statistician  
and Government Statistician  
for Western Australia**

**Analysis of Table 1.1**

The mean population for 1993-94 increased by 21,300 over the previous year. This compares with an increase of 19,900 between 1991-92 and 1992-93.

The mean population for the 1994 calendar year increased by 25,400. This figure was higher than the 1993 increase of 19,100.

In the March quarter 1995, Western Australia's population grew by 9,800 persons to 1,724,200. This increase was the highest recorded since March quarter 1990.

**1.1 ESTIMATED RESIDENT POPULATION**

Period	At end of period			Mean Population
	Males	Females	Persons <sup>1</sup>	
			000	
<b>Financial years</b>				
1991-92	833.2	824.2	1 657.4	1 647.5
1992-93	842.4	833.9	1 676.3	1 667.4
1993-94	854.6	846.4	1 701.1	1 688.7
<b>Calendar years</b>				
1992	837.7	829.1	1 666.7	1 657.9
1993	847.9	839.5	1 687.4	1 677.0
1994 p	861.1	853.3	1 714.4	1 702.4
<b>Quarters</b>				
Dec 93	847.6	839.6	1 687.3	..
Mar 94	851.7	843.5	1 695.3	..
Jun 94	854.6	846.4	1 701.1	..
Sep 94 p	858.5	850.5	1 709.0	..
Dec 94 p	861.1	853.3	1 714.4	..
Mar 95 p	866.1	858.2	1 724.2	..

<sup>1</sup> All estimates have been finalised using 1991 Census results  
Reference: Australian Demographic Statistics (3101.0)

**Analysis of Table 1.2**

In the March quarter 1995 the total increase in population of 9,900 was higher than for any quarter since March 1990. Between December 1994 and March 1995 quarters, all three components of population change increased.

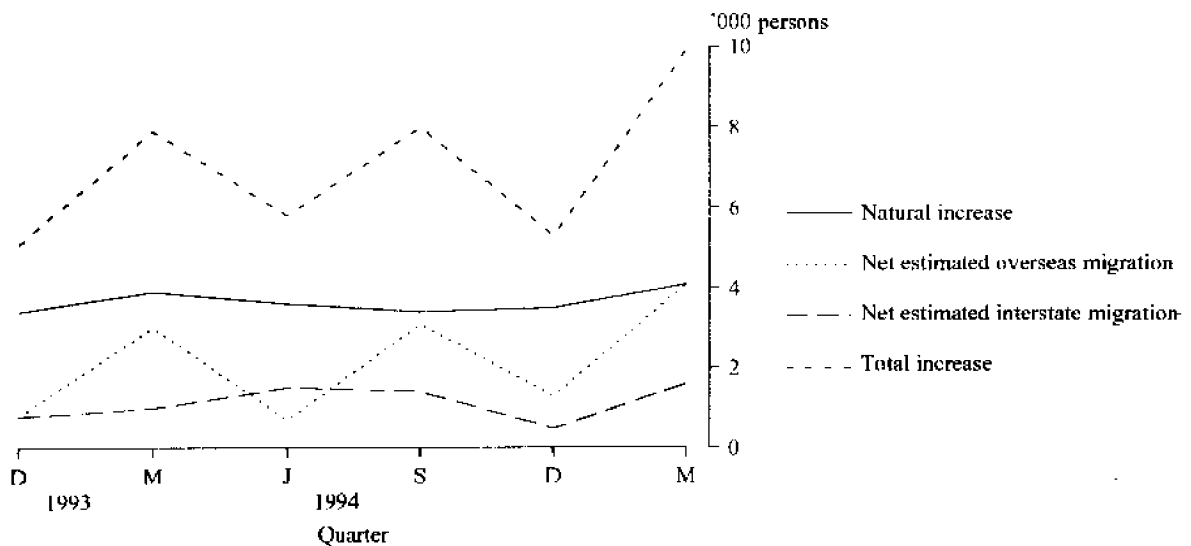
There was no change in the natural increase between 1993 and 1994. However, net estimated overseas migration jumped from 5,500 in 1993 to 8,100 in 1994, and net estimated interstate migration increased from 600 to 4,500 persons.

**1.2 COMPONENTS OF POPULATION CHANGE**

Period	Natural increase	Net estimated overseas migration <sup>1</sup>	Net estimated interstate migration	Total increase
(000)				
<b>Financial years</b>				
1991-92	15.1	7.7	-1.4	21.3
1992-93	14.7	4.6	-0.3	19.0
1993-94 p	14.3	6.7	3.7	24.7
<b>Calendar years</b>				
1992	14.9	5.7	-0.8	19.8
1993	14.4	5.5	0.6	20.5
1994 p	14.4	8.1	4.5	26.9
<b>Quarters</b>				
Dec 93	3.4	0.8	0.8	5.1
Mar 94	3.9	3.0	1.0	7.9
Jun 94	3.6	0.7	1.5	5.8
Sep 94 p	3.4	3.1	1.4	8.0
Dec 94 p	3.5	1.3	0.5	5.3
Mar 95 p	4.1	4.1	1.6	9.9

<sup>1</sup> Includes an adjustment for 'category jumping'  
Reference: Australian Demographic Statistics (3101.0)

**COMPONENTS OF POPULATION CHANGE  
WESTERN AUSTRALIA**



**Analysis of Table 1.3**

There was a rise of 412 births in March quarter 1995 from December quarter 1994. However, numbers in marriages dropped slightly from December quarter 1994, while the number of divorces declined by 277 and deaths by 223. These falls reflected a similar pattern in March quarter 1994 from December quarter 1993. Infant deaths increased by 8 in March quarter 1995.

**1.3 REGISTRATION OF BIRTHS, DEATHS, MARRIAGES AND DIVORCES**

Period	Live births	Infant deaths	Total deaths	Marriages	Divorces
<b>Financial years</b>					
1991-92	24 820	177	9 624	10 241	4 575
1992-93 r	25 080	147	9 998	10 214	4 385
1993-94 p	25 299	148	10 523	10 316	4 934
<b>Calendar years</b>					
1992	25 051	171	9 902	10 118	4 540
1993	25 079	143	10 318	10 382	4 654
1994 p	25 114	138	10 297	10 366	5 024
<b>Quarters</b>					
Dec 93	6 146	40	2 600	3 263	1 360
Mar 94 p	6 408	31	2 428	3 113	1 050
Jun 94 p	6 449	39	2 519	2 486	1 283
Sep 94 p	6 257	39	2 813	1 462	1 333
Dec 94 p	6 000	29	2 537	3 305	1 358
Mar 95 p	6 412	37	2 314	3 247	1 081

Reference: Australian Demographic Statistics (3101.0)

**Analysis of Table 1.4**

Rates for Live Births increased in March quarter 1995 from December quarter 1994, but dropped slightly for Deaths and Marriages. The Divorce rate for March quarter 1995 fell sharply from the preceding quarter as it did in March quarter 1994.

For more information regarding these tables, please contact Mike Joske on (09) 360 5276

**1.4 RATES OF BIRTHS, DEATHS, MARRIAGES AND DIVORCES**

Period	Live births <sup>1</sup>	Infant deaths <sup>2</sup>	Total deaths <sup>1</sup>	Marriages <sup>1</sup>	Divorce
<b>Financial years</b>					
1991-92	15.06	7.13	5.84	6.22	2.50
1992-93 r	15.04	5.86	5.99	6.13	2.63
1993-94 p	14.98	5.85	6.23	6.10	2.92
<b>Calendar years</b>					
1992	15.11	6.75	6.03	6.12	2.74
1993	14.95	5.70	6.15	6.19	2.78
1994 p	14.75	5.49	6.05	6.09	2.95
<b>Quarters</b>					
Dec 93	14.59	6.51	6.17	7.75	3.22
Mar 94 p	15.15	4.84	5.74	7.36	2.48
Jun 94 p	15.18	6.05	5.93	5.85	3.02
Sep 94 p	14.67	6.23	6.60	3.43	3.13
Dec 94 p	14.01	4.83	5.93	7.72	3.17
Mar 95 p	14.92	5.77	5.38	7.55	2.51

<sup>1</sup> For financial and calendar years the rate is per '000 mean resident population. For quarters, the mean is averaged between the previous and current quarterly population.

<sup>2</sup> Infant deaths per 1,000 live births.

Reference: Australian Demographic Statistics (3101.0)

Analysis of Table 2.1

In the June quarter 1995 there were 5,880 long term and permanent arrivals, an increase of 17% compared with the June quarter 1994. Long term departures increased 5% compared with the same period last year.

There were 2,780 permanent settler arrivals to Western Australia in the June quarter 1995. This is an increase of 590 arrivals or 27% compared with the same quarter last year. This follows on a 34% increase for March quarter 1995 compared with March quarter 1994.

The number of long term overseas visitor arrivals (visitors who intend to stay for longer than 12 months) for June quarter 1995 dropped sharply by 2,600 or 66% from the previous quarter. This repeated the pattern of 1994.

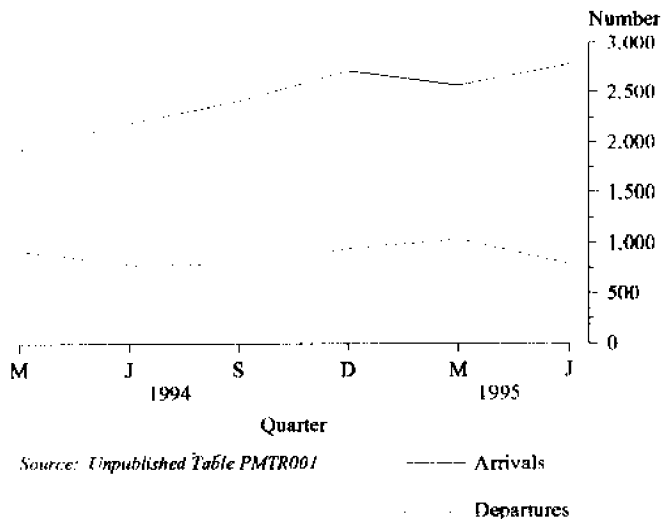
The total of 5,880 permanent and long term arrivals in June quarter 1995 exceeded departures by 2,230 or 61%.

## 2.1 PERMANENT AND LONG TERM ARRIVALS AND DEPARTURES

Period	Permanent movement	LONG TERM MOVEMENT		Total movement
		Australian residents	Overseas visitors	
ARRIVALS				
<b>Financial years</b>				
1992-93	7 930	8 260	6 090	22 280
1993-94	7 740	8 900	7 430	24 070
1994-95	10 380	9 070	8 470	27 920
<b>Quarters</b>				
Mar 94	1 920	2 340	3 550	7 810
Jun 94	2 190	1 700	1 150	5 040
Sep 94	2 410	2 120	2 080	6 610
Dec 94	2 720	2 950	1 160	6 830
Mar 95	2 570	2 210	3 910	8 700
Jun 95	2 780	1 790	1 310	5 880
DEPARTURES				
<b>Financial years</b>				
1992-93	3 410	7 180	3 680	14 260
1993-94	3 430	7 340	4 140	14 900
1994-95	3 580	7 560	4 710	15 860
<b>Quarters</b>				
Mar 94	920	2 210	960	4 090
Jun 94	780	1 880	840	3 490
Sep 94	800	1 750	880	3 430
Dec 94	950	1 590	1 730	4 270
Mar 95	1 040	2 390	1 070	4 500
Jun 95	790	1 830	1 030	3 650

Reference: Unpublished table PMTR0001

PERMANENT SETTLER ARRIVALS AND PERMANENT DEPARTURES  
WESTERN AUSTRALIA : LAST SIX QUARTERS





## Analysis of Table 2.2

Short term overseas visitor arrivals for June quarter 1995 increased 13% compared with the same quarter last year. This follows on a 3% increase for March quarter 1995 compared with March quarter 1994. There was a fall of 11,400 or 13% from March quarter 1995.

The number of Australian residents departing on short term overseas journeys in the 1995 June quarter increased by 10,100 or 17% from March quarter 1995 but this was only 1% higher than June quarter 1994.

## 2.2 SHORT TERM OVERSEAS ARRIVALS AND DEPARTURES

Period	Australian residents	Overseas visitors	Total
ARRIVALS			
<b>Financial years</b>			
1992-93	261 600	234 000	<b>495 600</b>
1993-94	269 900	297 700	<b>567 600</b>
1994-95	289 200	339 700	<b>628 900</b>
<b>Quarters</b>			
Mar 94	72 400	83 500	<b>155 900</b>
Jun 94	59 100	65 800	<b>124 800</b>
Sep 94	82 300	73 600	<b>155 900</b>
Dec 94	72 300	106 200	<b>178 500</b>
Mar 95	75 900	85 600	<b>161 500</b>
Jun 95	58 700	74 200	<b>132 900</b>
DEPARTURES			
<b>Financial years</b>			
1992-93	269 800	232 500	<b>502 300</b>
1993-94	274 800	290 500	<b>565 300</b>
1994-95	292 300	343 600	<b>635 900</b>
<b>Quarters</b>			
Mar 94	56 400	87 400	<b>143 800</b>
Jun 94	69 800	76 900	<b>146 600</b>
Sep 94	84 200	71 600	<b>155 800</b>
Dec 94	76 900	92 800	<b>169 700</b>
Mar 95	60 500	96 900	<b>157 400</b>
Jun 95	70 600	82 200	<b>152 800</b>

Reference: Unpublished table PMTR0001

## Analysis of Table 2.3

Short term overseas arrivals by air for June quarter 1995 (74,100) were up by 8,400 or 13% compared with June 1994. There was a fall of 11,400 arrivals from March quarter 1995 with the United Kingdom and Ireland recording the biggest drop of 7,800 or 41%. Singapore recorded a jump of 5,500 or 50%.

The major source countries were Singapore (with 22%), the United Kingdom and Ireland (15%), Indonesia (13%), and Malaysia (11%).

During the June quarter 1995, 63% of all short term arrivals by air were from Asia.

## 2.3 SHORT TERM OVERSEAS ARRIVALS BY AIR<sup>1</sup>

Country of residence	Mar 1994	Jun 1994	Sep 1994	Dec 1994	Mar 1995	Jun 1995
('000)						
<b>Asia</b>						
Indonesia	8.6	7.4	8.9	13.1	12.3	9.9
Japan	8.0	5.2	8.4	7.4	7.9	5.2
Malaysia	6.7	7.0	6.9	7.9	7.4	7.9
Singapore	11.3	14.5	10.9	21.4	10.9	16.4
Thailand	2.7	3.3	2.5	2.5	1.6	3.1
Other Asia	4.4	3.6	4.5	3.8	4.7	4.4
<b>Total Asia</b>	<b>41.8</b>	<b>41.0</b>	<b>42.1</b>	<b>56.1</b>	<b>44.8</b>	<b>46.8</b>
<b>Other</b>						
Germany	3.4	1.6	2.3	4.4	3.3	1.9
New Zealand	4.8	5.8	7.5	6.9	4.7	5.2
U.K. and Ireland	19.8	9.7	10.0	21.0	18.9	11.1
U.S.A.	3.0	1.9	2.4	3.5	2.8	2
Other	10.6	5.6	9.2	14.1	11.0	7.1
<b>Total Other</b>	<b>41.6</b>	<b>24.6</b>	<b>31.4</b>	<b>49.9</b>	<b>40.7</b>	<b>27.2</b>
<b>Total</b>	<b>83.4</b>	<b>65.7</b>	<b>73.5</b>	<b>106.0</b>	<b>85.5</b>	<b>74.1</b>

<sup>1</sup> Comprises travellers whose intended or actual stay is less than twelve months.

Reference: Unpublished table PMTR0031

## Analysis of Table 2.4

In June quarter 1995 there were 74,100 short term overseas arrivals by air. Of these, 58% (42,900 persons) gave the reason for their journey as 'holiday', and a further 25% (18,700) said they were 'visiting friends or relatives'.

People on holiday were mainly from Singapore (31%), Indonesia (17%), Malaysia (12%) and Japan (10%).

People visiting friends or relatives were predominantly from the United Kingdom and Ireland (37%), New Zealand (14%), Singapore (11%) and Malaysia (6%).

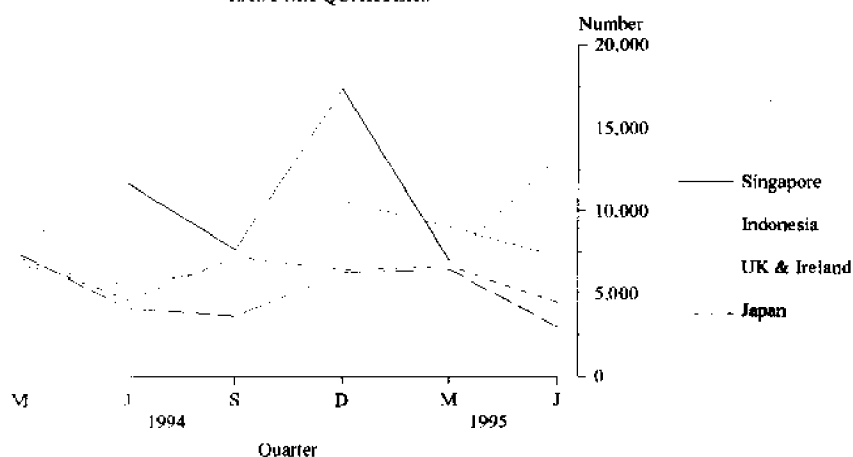
## 2.4 SHORT TERM OVERSEAS ARRIVALS BY AIR : PURPOSE OF JOURNEY: JUNE QUARTER 1995

Country of residence	Convention/ business <sup>1</sup>	Visiting friends/ relatives	Holiday	Employment and education	Other and not stated	Total this quarter
('000)						
<b>Asia</b>						
Indonesia	0.6	0.7	7.3	0.7	0.7	<b>9.9</b>
Japan	0.2	0.2	4.4	--	0.3	<b>5.2</b>
Malaysia	0.9	1.2	5.3	0.1	0.3	<b>7.9</b>
Singapore	0.6	2.0	13.2	0.2	0.4	<b>16.4</b>
Thailand	0.2	0.4	2.2	0.2	0.1	<b>3.1</b>
Other Asia	0.6	1.4	1.5	0.3	0.5	<b>4.4</b>
<b>Total Asia</b>	<b>3.1</b>	<b>5.9</b>	<b>33.9</b>	<b>1.6</b>	<b>2.3</b>	<b>46.8</b>
<b>Other</b>						
Germany	0.2	0.3	1.3	—	—	<b>1.9</b>
New Zealand	0.6	2.6	1.6	0.2	0.2	<b>5.2</b>
U.K. and Ireland	0.7	6.9	3.0	0.1	0.4	<b>11.1</b>
U.S.A.	0.5	0.8	0.4	0.1	0.2	<b>2.0</b>
Other	1.5	2.1	2.6	0.4	0.5	<b>7.1</b>
<b>Total Other</b>	<b>3.4</b>	<b>12.7</b>	<b>9.0</b>	<b>0.8</b>	<b>1.3</b>	<b>27.2</b>
<b>Total</b>	<b>6.5</b>	<b>18.7</b>	<b>42.9</b>	<b>2.4</b>	<b>3.6</b>	<b>74.1</b>

<sup>1</sup> From September 1994 includes convention, conference and business.

Reference: Unpublished table PMTR0031

SHORT TERM OVERSEAS ARRIVALS BY AIR:  
FOR HOLIDAYS IN WESTERN AUSTRALIA  
LAST SIX QUARTERS



Source: Unpublished table: PMTR0031

**Analysis of Table 2.5**

In June quarter 1995 there were 70,600 short term resident departures by air, only 900 or 1% more than for the same quarter of 1994.

Of residents departing overseas, 20% were destined for Indonesia and another 19% were headed for the United Kingdom and Ireland. Other common destinations were the United States of America (8%), Singapore (7%) and Malaysia (7%).

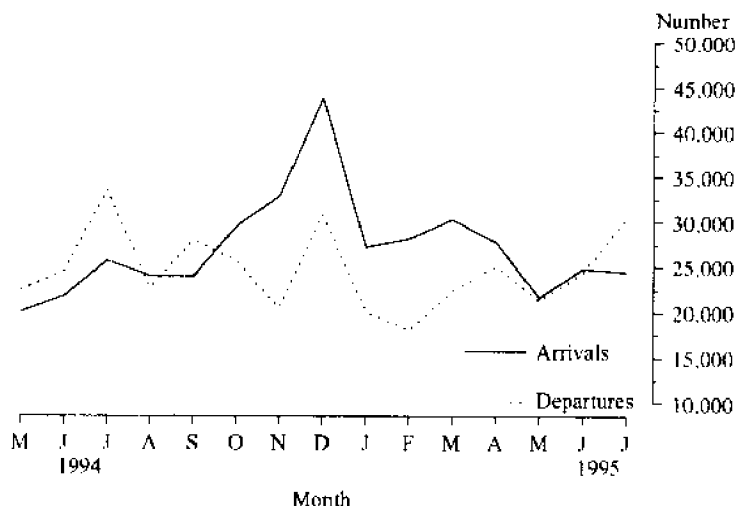
**2.5 SHORT TERM OVERSEAS RESIDENT DEPARTURES BY AIR**

Country departing to	Mar 1994	Jun 1994	Sep 1994	Dec 1994	Mar 1995	Jun 1995
('000)						
<b>Asia</b>						
Hong Kong	2.2	2.6	3.1	2.6	2.5	2.7
Indonesia <sup>1</sup>	14.0	14.4	21.0	19.4	14.0	13.8
Japan	0.7	0.9	0.9	0.9	0.7	0.7
Malaysia	5.7	5.4	6.5	6.5	5.0	5.1
Singapore	5.2	5.6	7.7	6.9	6.0	5.2
Thailand	2.5	3.9	4.7	4.1	3.2	3.5
Other Asia	5.0	3.8	3.8	5.9	4.9	4.2
<b>Total Asia</b>	<b>35.2</b>	<b>36.5</b>	<b>47.8</b>	<b>46.3</b>	<b>36.3</b>	<b>35.1</b>
<b>Other</b>						
Germany	0.3	0.9	0.8	0.7	0.7	0.9
Italy	0.7	1.4	1.5	0.8	0.6	1.2
New Zealand	5.4	3.8	6.5	7.6	7.3	4.4
U.K. and Ireland	6.2	12.7	13.3	8.1	6.2	13.2
U.S.A.	2.6	5.0	4.9	4.8	3.4	5.5
Other	5.8	9.4	9.2	8.4	5.8	10.4
<b>Total Other</b>	<b>21.0</b>	<b>33.2</b>	<b>36.2</b>	<b>30.4</b>	<b>24.0</b>	<b>35.4</b>
<b>Total</b>	<b>56.2</b>	<b>69.7</b>	<b>84.1</b>	<b>76.8</b>	<b>60.3</b>	<b>70.6</b>

<sup>1</sup> Includes Bali.

Reference: Unpublished table PMTR0031

**TOTAL SHORT TERM ARRIVALS OF OVERSEAS VISITORS AND DEPARTURES OF WESTERN AUSTRALIAN RESIDENTS BY MONTH**



Source: Unpublished table PMTR0013

## Analysis of Table 2.6

The main reasons given for short term resident departures by air in June quarter 1995 were 'holiday' (50%), 'visiting friends or relatives' (23%), and attending 'convention or conference' or 'on business' (19%).

The most popular destinations for residents departing on holiday were Indonesia (28%), and the United Kingdom and Ireland (18%).

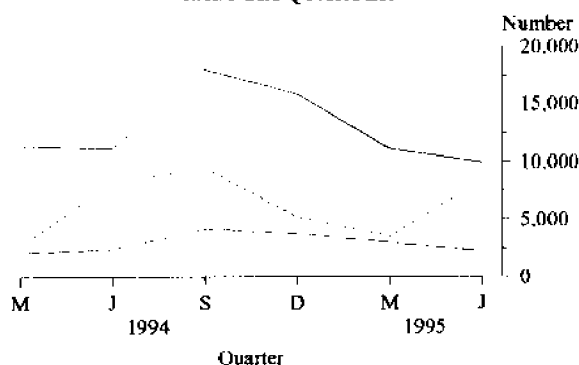
Of those residents departing to visit friends or relatives overseas, 30% went to the United Kingdom and Ireland and a further 11% went to New Zealand.

## 2.6 SHORT TERM OVERSEAS RESIDENT DEPARTURES BY AIR: PURPOSE OF JOURNEY: JUNE QUARTER 1995

Country of residence	Convention/ business <sup>1</sup>	Visiting friends/ relatives	Holiday	Employment and education	Other and not stated	Total this quarter
<b>Asia</b>						
Hong Kong	0.7	0.4	1.3	0.1	0.2	2.7
Indonesia	2.5	0.4	10.0	0.5	0.4	13.8
Japan	0.2	0.1	0.4	0.1	—	0.7
Malaysia	1.2	1.1	2.3	0.2	0.2	5.1
Singapore	1.3	1.0	2.3	0.5	0.2	5.2
Thailand	0.3	0.3	2.7	0.1	0.2	3.6
Other Asia	1.5	1.2	1.1	0.3	0.1	4.2
<i>Total Asia</i>	7.7	4.4	20.0	1.7	1.3	35.1
<b>Other</b>						
Germany	0.3	0.3	0.2	—	0.1	0.9
Italy	0.1	0.4	0.6	—	—	1.2
New Zealand	0.7	1.7	1.5	0.2	0.3	4.4
U.K. and Ireland	1.5	4.9	6.2	0.3	0.3	13.2
U.S.A.	1.3	1.1	2.8	—	0.2	5.5
Other	2.1	3.2	3.9	0.7	0.4	10.4
<i>Total Other</i>	6.0	11.7	15.2	1.2	1.4	35.4
<b>Total</b>	<b>13.7</b>	<b>16.1</b>	<b>35.2</b>	<b>2.9</b>	<b>2.7</b>	<b>70.6</b>

<sup>1</sup> From September 1994 includes convention, conference and business.  
Reference: Unpublished table PMTR0031

SHORT TERM OVERSEAS RESIDENT DEPARTURES BY AIR:  
PURPOSE OF JOURNEY: HOLIDAY  
LAST SIX QUARTERS



Source: Unpublished Table PMTR0031 — Indonesia  
..... Europe  
- - - Singapore

## 2.7 TOURIST ACCOMMODATION

Period	Hotels, Motels, Guest Houses with facilities			Caravan parks		
	Guest rooms	Room occupancy rates	Guest arrivals	Number of sites	Site occupancy rates	Guest arrivals
	Number	%	'000	Number	%	'000
<b>Financial years</b>						
1991-92	14 624 <sup>1</sup>	52	1 934.7	28 174 <sup>1</sup>	32	1 260
1992-93	14 577 <sup>1</sup>	53	1 965.2	28 308 <sup>1</sup>	38	1 194
1993-94	14 754 <sup>1</sup>	57	2 153.8	29 202 <sup>1</sup>	39	1 250
<b>Months</b>						
Apr 94		57	180		41	127
May 94		53	159		36	82
Jun 94	14 754	54	164	29 202	38	92
Jul 94		57	189		45	131
Aug 94		59	193		45	127
Sept 94	14 733	65	211	29 353	42	117
Oct 94		68	218		39	107
Nov 94		62	180		35	68
Dec 94	14 734	54	182	29 625	37	100
Jan 95		58	192		45	135
Feb 95		60	156		38	70
Mar 95	14 742	60	178	29 480	37	80
Apr 95		59	182		41	116
May 95		57	173		36	79
Jun 95	14 754	57	166	29 554	40	100
<b>Holiday Flats, Units, Houses</b>						
Period	Guest Units	Unit occupancy rates	Unit lettings	Bed Spaces	Visitor Hostels	
		Bed occupancy rates			Bed-nights sold	
		%			%	
<b>Financial years</b>						
1991-92	1 895 <sup>1</sup>	53	91	2 683 <sup>1</sup>	34	323
1992-93	1 993 <sup>1</sup>	52	86	3 112 <sup>1</sup>	36	386
1993-94	2 224 <sup>1</sup>	55	96	3 119 <sup>1</sup>	38	416
<b>Months</b>						
Apr 94		64	9		40	37
May 94		43	7		34	32
Jun 94	2 224	47	7	3 119	34	32
Jul 94		58	9		38	36
Aug 94		50	8		34	32
Sept 94	2 255	58	10	3 042	38	34
Oct 94		66	10		39	34
Nov 94		55	9		41	35
Dec 94	2 302	60	10	2 858	42	37
Jan 95		73	10		46	39
Feb 95		58	8		45	35
Mar 95	2 414	56	10	2 794	43	37
Apr 95		63	10		48	40
May 95		45	8		41	36
Jun 95	2 419	45	8	2 834	41	35

<sup>1</sup> Number at 30 June.

Reference: Tourist Accommodation, Western Australia (8635.5)

For more information regarding this table, please contact Pam Prince on (09) 360 5932

**Analysis of Table 3.1**

The seasonally adjusted unemployment rate increased 0.3 percentage points to 7.3% in October 1995. The trend estimate of unemployment remained at 7.3%.

The seasonally adjusted number of persons unemployed decreased by 2 700 to 65 500, while the number of persons employed increased by 2 400 to 829 400.

Western Australia's seasonally adjusted participation rate for October 1995 decreased by 0.1 percentage point to 66.3% and continues to be the highest of all states.

### 3.1 LABOUR FORCE STATUS (AGED 15 YEARS AND OVER): SEASONALLY ADJUSTED SERIES

Month	Employed full-time	Total employed	Total unemployed	Unemployment rate	Participation rate
	000	000	000	%	%
<b>Males</b>					
Dec 94	415.8	471.0	37.6	7.4	77.0
Jan 95	416.8	472.5	39.9	7.8	77.5
Feb 95	417.1	466.6	46.0	9.0	77.4
Mar 95	423.2	476.4	37.3	7.3	77.4
Apr 95	426.1	479.3	41.2	7.9	78.3
May 95	426.3	476.6	38.7	7.5	77.3
Jun 95	430.3	477.8	36.1	7.0	77.0
Jul 95	432.4	479.7	33.9	6.6	76.8
Aug 95	426.8	474.8	34.4	6.7	76.0
Sep 95	431.9	478.0	37.4	7.3	76.8
Oct 95	429.8	477.8	36.5	7.1	76.5
<b>Females</b>					
Dec 94	185.5	345.7	26.3	7.1	55.8
Jan 95	183.2	344.4	26.4	7.1	55.6
Feb 95	192.1	349.2	26.0	6.9	56.1
Mar 95	188.3	350.3	26.9	7.1	56.3
Apr 95	196.7	359.0	24.8	6.5	57.2
May 95	194.8	358.5	27.7	7.2	57.5
Jun 95	186.0	351.2	29.2	7.7	56.5
Jul 95	185.2	351.9	32.6	8.6	57.0
Aug 95	192.9	355.8	27.4	7.2	56.7
Sep 95	190.6	349.0	30.8	8.1	56.1
Oct 95	187.5	351.7	29.0	7.6	56.1
<b>Persons</b>					
Dec 94	601.3	816.7	63.9	7.3	66.4
Jan 95	600.0	816.9	66.4	7.5	66.5
Feb 95	609.2	815.8	72.0	8.1	66.7
Mar 95	611.5	826.7	64.2	7.2	66.8
Apr 95	622.8	838.3	66.1	7.3	67.7
May 95	621.0	835.1	66.4	7.4	67.4
Jun 95	616.3	829.0	65.3	7.3	66.7
Jul 95	617.6	831.6	66.5	7.4	66.9
Aug 95	619.7	830.6	61.8	6.9	66.3
Sep 95	622.5	827.0	68.2	7.6	66.4
Oct 95	617.3	829.4	65.5	7.3	66.3

Reference: The Labour Force, Australia (6202.0)

## Analysis of Table 3.2

### 3.2 LABOUR FORCE STATUS (AGED 15 YEARS AND OVER): TREND SERIES

For more information regarding these tables, please contact Renae Gibson on (09) 360 5332.

Month	Employed full-time	Total employed	Total unemployed	Unemployment rate	Participation rate
	'000	'000	'000	%	%
<b>Males</b>					
Dec 94	414.8	469.1	39.9	7.8	77.1
Jan 95	416.4	470.9	40.5	7.9	77.3
Feb 95	419.2	472.9	40.9	8.0	77.5
Mar 95	422.2	474.7	40.6	7.9	77.6
Apr 95	424.9	476.1	39.6	7.7	77.6
May 95	427.1	477.2	39.2	7.4	77.4
Jun 95	428.8	477.9	36.7	7.1	77.1
Jul 95	430.0	478.1	35.3	6.9	76.8
Aug 95	430.8	477.9	35.2	6.9	76.6
Sep 95	430.6	477.4	35.5	6.9	76.4
Oct 95	430.7	477.3	35.4	6.9	76.3
<b>Females</b>					
Dec 94	185.8	343.8	27.0	7.3	55.7
Jan 95	187.8	346.8	26.3	7.1	55.9
Feb 95	189.6	349.9	26.0	6.9	56.2
Mar 95	190.8	352.3	26.3	6.9	56.5
Apr 95	191.3	353.9	27.0	7.1	56.8
May 95	191.2	354.7	27.8	7.3	56.9
Jun 95	190.6	355.0	28.6	7.5	57.0
Jul 95	190.0	354.9	29.3	7.6	57.0
Aug 95 r	189.5	352.6	29.8	7.8	56.6
Sep 95 r	188.9	351.7	30.0	7.9	56.4
Oct 95	188.4	350.7	30.1	7.9	56.1
<b>Persons</b>					
Dec 94	600.5	812.9	66.8	7.6	66.3
Jan 95	604.1	817.6	66.9	7.6	66.6
Feb 95	608.5	822.3	66.9	7.5	66.8
Mar 95	612.8	826.5	66.8	7.5	67.0
Apr 95	616.4	830.1	66.5	7.4	67.0
May 95	619.5 r	831.9	66.0	7.4	67.1
Jun 95	619.5 r	832.8	63.5	7.3	67.0
Jul 95	619.5 r	833.0	64.6	7.2	66.8
Aug 95 r	619.5	830.3	65.4	7.3	66.6
Sep 95 r	619.5	829.1	65.6	7.3	66.4
Oct 95	619.0	828.0	65.6	7.3	66.2

Reference: The Labour Force, Australia (6202.0)

## Analysis of Table 3.3

The total number of employees rose from 551,000 in December 1993 to 558,800 in December 1994. During this twelve month period, the public sector total number of employees rose by 3,000 to 160,100, and the private sector total number of employees showed an increase of 4,900 to 398,800.

### 3.3 NUMBER OF EMPLOYED WAGE AND SALARY EARNERS BY INDUSTRY AND SECTOR

Particulars	Number of Employees				Gross earnings
	Dec 1993	Jun 1994	Sept 1994	Dec 1994	Dec quarter 1994
	'000	'000	'000	'000	\$m
<b>INDUSTRY</b>					
Mining	18.5	17.7	20.7	21.5	292.1
Manufacturing	63.7	53.2	59.7	57.0	474.0
Electricity, gas and water	8.9	8.6	8.4	8.2	92.7
Construction	35.3	31.9	26.0	26.3	233.9
Wholesale trade	41.6	36.4	38.9	38.1	294.3
Retail trade	75.1	79.6	81.8	82.5	346.5
Transport and storage	22.1	21.7	22.2	21.8	205.0
Communication	8.5	8.3	8.5	8.7	89.0
Finance, property and business	60.0	61.6	63.4	66.3	542.3
Public administration and defence	27.7	30.0	29.9	31.7	263.7
Community services	143.9	148.3	149.1	151.1	1 090.9
Recreation, personal and other services	44.0	38.9	42.3	44.1	198.7
<b>Total all industries<sup>1</sup></b>	<b>551.0</b>	<b>537.8</b>	<b>552.2</b>	<b>558.8</b>	<b>4 136.3</b>
<b>SECTOR</b>					
Private	393.9	382.9	398.9	398.8	2 741.2
Government					
Commonwealth	22.8	22.0	21.5	22.1	209.9
State	121.6	119.4	118.5	125.3	1 097.7
Local	12.7	13.5	13.3	12.7	87.5
Total Government	157.1	154.9	153.2	160.1	1 395.1
<b>Total all sectors</b>	<b>551.0</b>	<b>537.8</b>	<b>552.2</b>	<b>558.8</b>	<b>4 136.3</b>

Particulars	NOVEMBER 1993			NOVEMBER 1994		
	Males	Females	Persons	Males	Females	Persons
<b>INDUSTRY</b>						
Mining	15.8	2.5	18.3	18.2	3.0	21.2
Manufacturing	48.3	14.7	63.0	44.1	13.5	57.7
Electricity, gas and water	8.0	0.9	9.0	7.2	0.9	8.1
Construction	29.3	6.3	35.6	21.6	4.9	26.5
Wholesale trade	30.1	12.3	42.4	27.0	11.5	38.4
Retail trade	32.7	40.1	72.7	32.0	48.8	80.8
Transport and storage	18.1	3.9	22.0	16.1	5.8	21.9
Communication	6.0	2.4	8.4	5.9	2.7	8.6
Finance, property and business	27.1	33.1	60.2	29.8	35.6	65.4
Public administration and defence	15.8	10.5	26.4	18.2	12.5	30.7
Community services	52.8	93.8	146.6	47.5	104.0	151.5
Recreation, personal and other services	18.6	24.9	43.6	17.4	24.5	41.9
<b>Total all industries<sup>1</sup></b>	<b>303.9</b>	<b>245.9</b>	<b>549.8</b>	<b>286.2</b>	<b>267.9</b>	<b>554.0</b>
<b>SECTOR</b>						
Private	224.7	168.1	392.8	206.9	187.5	394.4
Government						
Commonwealth	13.9	9.0	22.9	12.8	8.8	21.7
State	57.4	64.2	121.6	58.5	66.8	125.2
Local	7.9	4.6	12.5	8.0	4.8	12.8
Total Government	79.2	77.8	157.0	79.3	80.4	159.6
<b>Total all sectors</b>	<b>303.9</b>	<b>245.9</b>	<b>549.8</b>	<b>286.2</b>	<b>267.9</b>	<b>554.0</b>

<sup>1</sup> Includes employees of government agencies classified to Agriculture, forestry, fishing and hunting.

Reference: Employed Wage and Salary Earners (6248.0)



## Analysis of Table 3.4

Over the past twelve months to August 1995, Western Australian average weekly ordinary time earnings for full-time adult persons increased by 6.6 per cent compared with 5.1 per cent for Australia.

Western Australian average weekly total earnings for full-time adult persons in August 1995 were \$702.90, while the comparable Australian average earnings in August 1995 were \$691.20.

## 3.4 AVERAGE WEEKLY EARNINGS OF EMPLOYEES

Reference period	Males		All Males Total earnings
	Full Time Adults		
	Ordinary time earnings	Total earnings	
			(dollars)
20 May 94	663.70	717.00	622.70
19 Aug 94	682.30	734.70	643.80
18 Nov 94	692.40	758.00	663.70
17 Feb 95	695.50	758.60	655.20
19 May 95	701.80	764.20	656.60
18 Aug 95	716.80	776.20	677.00

Reference period	Females		All Females Total earnings
	Full Time Adults		
	Ordinary time earnings	Total earnings	
			(dollars)
20 May 94	524.10	539.10	384.70
19 Aug 94	515.10	528.10	381.80
18 Nov 94	523.70	538.40	398.50
17 Feb 95	536.90	553.60	405.20
19 May 95	541.80	557.40	403.90
18 Aug 95	555.90	568.70	401.30

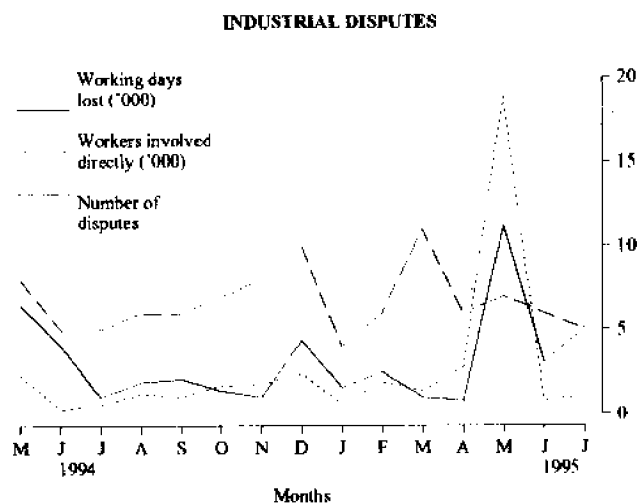
Reference period	Persons		All employees Total earnings
	Full Time Adults		
	Ordinary time earnings	Total earnings	
			(dollars)
20 May 94	612.30	651.50	507.70
19 Aug 94	619.30	656.90	516.20
18 Nov 94	630.10	676.90	538.80
17 Feb 95	637.50	683.60	537.10
19 May 95	645.80	691.90	539.90
18 Aug 95	660.00	702.90	544.40

Reference: Average Weekly Earnings, States and Australia, (6302.0)

### 3.5 INDUSTRIAL DISPUTES CAUSING STOPPAGE OF WORK

Period	Number of disputes	Workers Involved		Total	Working days lost
		Directly	Indirectly		
	Number	'000	'000	'000	'000
<b>Calendar year</b>					
1992	134	28.6	0.2	28.8	53.6
1993	111	27.4	0.2	27.6	29.5
1994	82	15.7	0.2	15.9	27.4
<b>Months</b>					
May 94	8	2.3	—	2.3	6.5
Jun 94	5	0.3	—	0.3	4.1
Jul 94	5	0.6	—	0.6	1.0
Aug 94	6	1.2	—	1.2	1.9
Sep 94	6	1.0	—	1.0	2.1
Oct 94	7	1.7	—	1.7	1.4
Nov 94	8	1.8	—	1.8	1.0
Dec 94	10	2.4	0.1	2.5	4.4
Jan 95	4	0.6	—	0.6	1.6
Feb 95	6	1.9	—	1.9	2.5
Mar 95	11	1.4	—	1.4	1.0
Apr 95	6	2.8	—	2.8	0.8
May 95	7	18.8	—	18.8	11.2
Jun 95	6	0.8	—	0.8	3.1
Jul 95	5	1.1	—	1.1	5.1

Reference: Industrial Disputes, Australia (6321.0)



Source: Unpublished ABS data

Analysis of Table 4.1

### 4.1 MONTHLY RETAIL TURNOVER : ORIGINAL ESTIMATES

Data in this table have been revised and now show data from the redesigned retail Business Survey. see Information Paper (8511.0) issued on 1 December 1994 or Retail Trade Australia (8501.0) for more detail on the survey redesign.

Estimated turnover of Western Australian retail establishments during September 1995 was \$987.5 million (at current prices), an increase of 0.9% over the previous month. The trend estimates show an increase of 1.0% over the previous month.

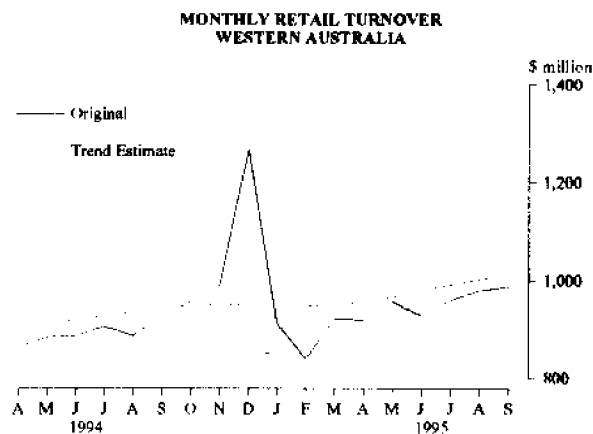
Months	Food	Department stores	Clothing and soft goods stores	Other Household goods	Recreational goods
Sep 94	393.2	86.5	61.0	102.2	45.3
Oct 94	394.8	95.2	61.9	103.3	51.1
Nov 94	405.9	100.6	67.3	112.0	53.7
Dec 94	481.9	176.7	87.7	143.3	77.1
Jan 95	398.9	76.3	55.8	106.4	48.9
Feb 95	381.2	68.5	48.6	93.2	41.0
Mar 95	418.6	76.2	54.5	101.9	44.4
Apr 95	404.9	91.9	58.7	96.6	45.2
May 95	407.6	99.7	67.8	111.7	46.5
Jun 95	403.5	91.5	63.6	111.3	43.6
Jul 95	414.4	85.9	60.9	106.3	53.0
Aug 95	431.2	89.0	59.1	105.2	53.1
Sep 95	430.0	84.7	61.1	109.4	52.5

From September 1994 to September 1995, trend estimates indicate a national annual growth rate of 8.0%. The annual growth rate for Western Australia for the same period was 7.1%.

The national trend estimates show increases of 0.8%, 0.7% and 0.5% for the months of July, August and September 1995. For the same three months, Western Australia recorded increases of 1.3%, 1.2% and 1.0% respectively.

Months	Other	Hospitality and services	Totals		
			Original	Seasonally adjusted	Trend estimates
Sep 94	84.0	155.2	927.4	949.7	945.2
Oct 94	81.4	169.1	956.8	952.7	950.0
Nov 94	83.4	166.7	989.6	951.8	951.3
Dec 94	113.4	186.1	1 266.2	950.1	950.8
Jan 95	68.0	156.6	910.9	952.4	949.6
Feb 95	63.1	144.2	839.8	945.7	948.8
Mar 95	69.0	157.4	922.0	949.2	950.6
Apr 95	66.4	155.4	919.1	953.1	956.7
May 95	73.4	149.2	955.9	966.1	966.6
Jun 95	65.3	149.4	928.2	974.2	978.7
Jul 95	70.6	167.9	959.0	984.8	991.2
Aug 95	77.4	163.6	978.6	1 026.8	1 002.8
Sep 95	79.9	169.9	987.5	1 006.7	1 012.4

Reference: Retail Trade, Australia (8501.0)



Source: Retail Trade, Australia (8501.0)

**Analysis of Table 4.2**

The All Groups Consumer Price Index (CPI) Perth increased by 0.6% between the June and September quarters 1995.

Major contributors to the increase were transportation (up 1.6%); food (up 0.8%); housing (up 1.0%).

The following sub-groups had a significant impact on the rise from the June quarter 1995 to the September quarter 1995: new motor vehicles; automotive fuel; urban transport fares; cakes and biscuits; local government rates and charges; and beer.

The increase in the CPI from September 1994 to September 1995 was 5.0%. Contributing most to the annual increase were housing (up 13.0%); health and personal care (up 6.3%); tobacco and alcohol (up 5.2%); transportation (up 4.7%); food (up 4.5%); recreation and education (up 4.1%); and household equipment and operation (2.0%). The major offsetting factor in this annual change was a decrease in clothing (down 0.9%).

**4.2 CONSUMER PRICE INDEX: PERTH**

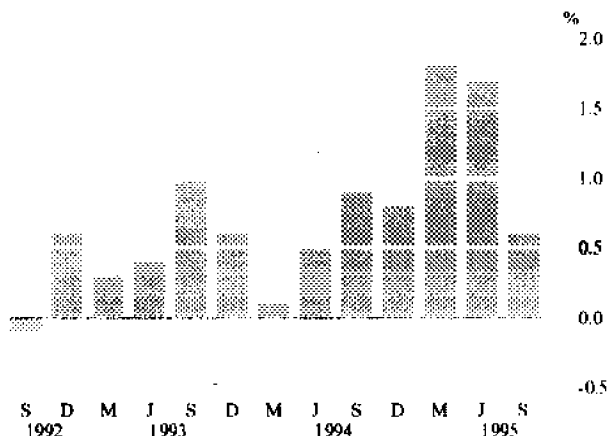
Period	Food	Clothing	Housing	Household equipment and operation	Transportation
(Base of each index: Year 1989-90 = 100.0)					
<b>Financial years</b>					
1992-93	108.8	108.6	87.9	107.4	111.2
1993-94	110.0	108.2	87.3	108.2	114.4
1994-95	113.4	107.4	94.0	109.0	119.0
<b>Quarters</b>					
Jun 94	109.9	108.5	87.8	108.1	113.9
Sep 94	111.6	107.9	88.5	107.9	116.0
Dec 94	111.4	107.4	91.8	108.3	117.9
Mar 95	115.1	106.9	96.9	109.0	117.2
Jun 95	115.7	107.5	99.0	108.9	119.3
Sep 95	116.6	106.9	100.0	110.0	121.4

Period	Tobacco and alcohol	Health and personal care	Recreation and education	All groups
<b>Financial years</b>				
1992-93	114.0	119.8	106.7	106.2
1993-94	128.8	123.8	107.6	108.5
1994-95	136.8	130.4	109.6	112.3
<b>Quarters</b>				
Jun 94	131.8	125.5	107.5	109.1
Sep 94	133.6	127.6	107.7	110.1
Dec 94	135.9	128.4	109.4	111.0
Mar 95	137.7	130.1	109.0	113.0
Jun 95	140.2	135.7	112.3	114.9
Sep 95	140.6	135.7	112.1	115.6

Reference: Consumer Price Index (6401.0)

**CPI ALL GROUPS: PERTH**  
Percentage change from previous quarter



**Analysis of Table 5.1**

The number of houses approved in September 1995 decreased by 6.6% when compared with August 1995 and decreased by 33.1% when compared with September 1994. The number of total dwelling units approved in September 1995 decreased by 11.7% when compared with August 1995 and decreased by 42.3% when compared with September 1994.

The Building Approvals trend series for houses peaked at 1,670 in April 1994 and since that time has steadily declined to a level of 1,032 in September 1995.

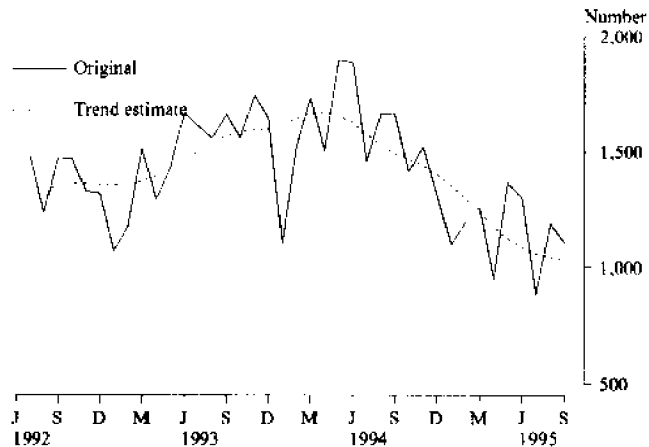
For more information about this table, call David Brown on (09) 360 5129

**5.1 NEW RESIDENTIAL BUILDING APPROVED**

Period	Houses		Other Residential Buildings		Total <sup>1</sup>	
	Dwelling Units	Value	Dwelling Units	Value	Dwelling Units	Value
	Number	\$m	Number	\$m	Number	\$m
<b>Financial years</b>						
1992-93	16 485	1 173.7	5 994	345.7	22 568	1 519.4
1993-94	19 437	1 503.7	7 144	461.0	26 776	1 964.7
1994-95	16 207	1 354.3	6 105	420.3	22 427	1 774.6
<b>Months</b>						
Jul 94	1 458	123.3	658	44.4	2 128	167.8
Aug 94	1 665	134.8	644	42.4	2 320	177.3
Sep 94	1 660	133.6	773	49.2	2 445	182.8
Oct 94	1 415	113.6	453	31.7	1 878	145.3
Nov 94	1 522	129.0	602	40.4	2 149	169.3
Dec 94	1 314	110.1	526	33.3	1 856	143.4
Jan 95	1 100	90.6	431	25.8	1 535	116.4
Feb 95	1 195	102.0	383	26.8	1 586	129.0
Mar 95	1 258	111.0	496	39.0	1 761	150.4
Apr 95	952	81.7	222	16.1	1 180	97.9
May 95	1 367	115.2	426	35.7	1 794	151.0
Jun 95	1 301	109.0	491	35.3	1 795	144.3
Jul 95	883	77.8	316	23.1	1 203	100.9
Aug 95	1 189	104.8	399	30.6	1 596	135.4
Sep 95	1 111	99.2	293	22.9	1 410	122.1

<sup>1</sup> Includes conversions  
Reference: Building Approvals, Western Australia (8731.5)

**NEW HOUSES APPROVED  
WESTERN AUSTRALIA**



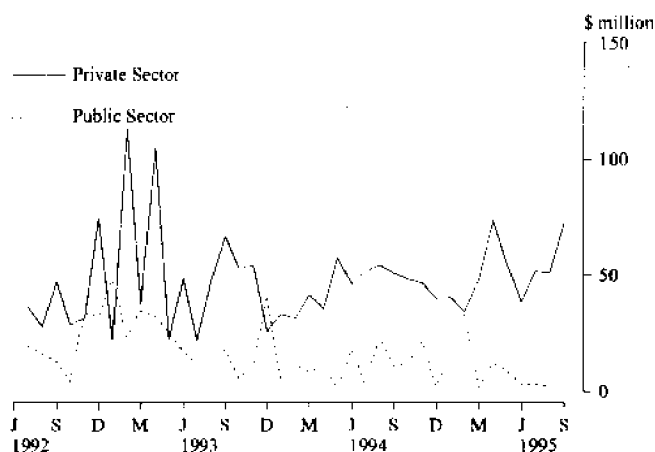
Source: Building Approvals, Western Australia (8731.5)

## 5.2 NON-RESIDENTIAL BUILDING APPROVED

Period	Private	Public	Total
(\$ million)			
<b>Financial years</b>			
1992-93	591.3	298.3	889.6
1993-94	513.1	153.9	667.0
1994-95	580.9	147.3	728.2
<b>Months</b>			
Jul 94	51.5	3.5	55.0
Aug 94	54.2	22.9	77.1
Sep 94	50.9	11.0	61.9
Oct 94	48.3	11.9	60.2
Nov 94	46.4	21.6	68.0
Dec 94	39.9	2.1	42.0
Jan 95	40.5	14.3	54.8
Feb 95	34.2	34.1	68.0
Mar 95	48.2	1.9	50.1
Apr 95	73.6	12.2	85.8
May 95	54.7	8.6	63.3
Jun 95	38.5	3.1	41.6
Jul 95	51.9	3.2	55.1
Aug 95	51.0	2.2	53.2
Sep 95	72.2	6.8	79.0

Reference: Building Approvals, Western Australia (8731.5)

NON-RESIDENTIAL BUILDING APPROVED  
WESTERN AUSTRALIA



Source: Building Approvals, Western Australia (8731.5)

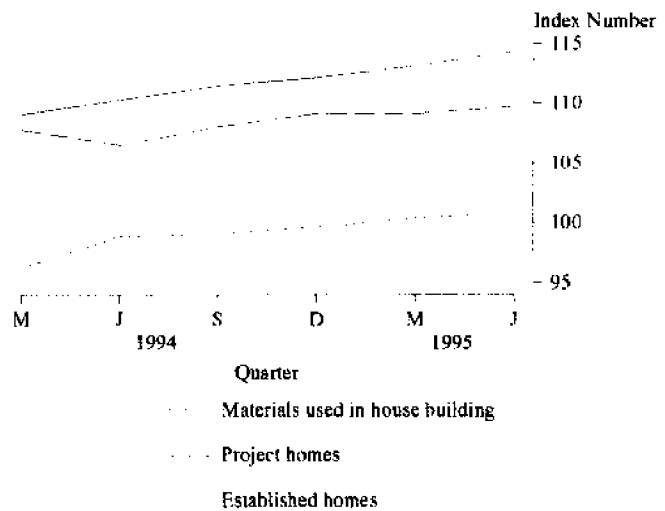
### 5.3 SELECTED HOUSING PRICE INDEXES: PERTH

Period	Materials used in house building <sup>1</sup>	Project Homes	Established homes
(Base of each index: 1989/90 = 100.0)			
<b>Financial years</b>			
1992-93	106.9	92.8	98.4
1993-94	109.0	96.2	104.7
1994-95	112.8	100.0	109.0
<b>Quarters</b>			
Mar 94	109.0	96.2	107.7
Jun 94	110.2	98.8	106.4
Sep 94	111.4	99.0	108.0
Dec 94	112.1	99.6	109.1
Mar 95	113.3	100.4	109.1
Jun 95	114.3	100.8	109.7

<sup>1</sup> Materials Used in House Building Index has been converted to a 1989/90 base for comparability purposes of this table.

References: Price Index of Materials Used in House Building, Six State Capital Cities and Canberra (6408.0); House Price Indexes, Eight Capital Cities (6418.0)

HOUSING INDEXES: PERTH



## 5.4 PRICE INDEX OF MATERIALS USED IN BUILDING OTHER THAN HOUSE BUILDING: PERTH

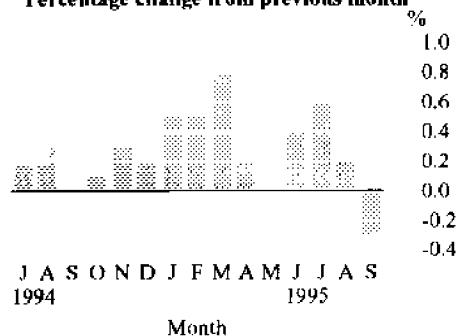
Period	All groups	Special Combinations of Building Materials		
		Electrical materials	Mechanical services	Plumbing materials
(Base of each index 1989-90 = 100)				
<b>Financial years</b>				
1992-93	105.7	105.7	103.7	103.7
1993-94	107.1	101.9	104.2	105.1
1994-95 p	110.1	107.3	106.8	114.4
<b>Months</b>				
Jul 94	108.6	103.6	104.8	109.3
Aug 94	108.9	103.7	104.9	110.9
Sep 94	108.9	103.6	105.3	111.2
Oct 94	109.0	103.7	105.5	113.3
Nov 94	109.3	105.2	105.7	116.1
Dec 94	109.5	107.7	105.8	115.0
Jan 95	110.0	109.1	106.1	115.2
Feb 95	110.5	109.4	107.3	115.3
Mar 95	111.4	109.4	108.5	115.5
Apr 95	111.6	110.2	109.0	115.3
May 95	111.6	110.2	108.9	116.8
Jun 95 p	112.0	112.0	109.3	118.7
Jul 95 p	112.7	112.6	109.9	120.4
Aug 95 p	112.9	113.1	109.8	120.9
Sep 95 p	112.6	113.2	109.8	119.9

Period	Selected Major Building Materials				
	Structural timber	Clay bricks	Ready mixed concrete	Structural steel	Aluminium windows
<b>Financial years</b>					
1992-93	102.7	111.3	115.5	96.3	103.8
1993-94	110.6	113.9	116.6	100.4	104.4
1994-95 p	110.6	118.0	117.8	103.6	112.4
<b>Months</b>					
Jul 94	111.7	114.9	119.6	103.2	108.1
Aug 94	111.7	117.8	119.3	103.4	108.1
Sep 94	111.7	117.8	119.3	103.4	108.1
Oct 94	111.7	117.8	118.3	103.4	108.8
Nov 94	111.8	117.8	117.8	103.4	109.4
Dec 94	109.7	117.8	117.3	103.4	109.4
Jan 95	109.8	117.8	117.3	103.7	112.3
Feb 95	109.7	117.8	117.2	103.7	112.3
Mar 95	109.7	117.8	117.5	103.7	118.2
Apr 95	109.8	117.8	117.5	103.7	118.2
May 95	110.0	120.2	115.9	103.8	118.2
Jun 95 p	109.9	120.2	116.0	103.8	118.2
Jul 95 p	109.9	120.2	116.0	105.7	118.2
Aug 95 p	109.7	120.2	117.8	105.9	118.2
Sep 95 p	109.7	120.2	115.0	105.9	118.2

Reference: Price Index of Materials Used in Building Other Than House Building (6407.0)

### PRICE INDEX OF MATERIALS USED IN BUILDING OTHER THAN HOUSE BUILDING ALL GROUPS: PERTH

Percentage change from previous month





**Analysis of Table 6.1**

All livestock slaughtering with the exception of pigs showed a decrease during 1994-95

**6.1 LIVESTOCK SLAUGHTERED**

Period	Cattle		Total	Calves	Sheep	Lambs	Pigs
	Bulls, bullocks, steers	Cows, heifers					
'000							
<b>Financial years</b>							
1992-93	272	180	452	5	3 752	1 481	568
1993-94	271	168	439	4	2 952	1 553	550
1994-95p	243	186	430	4	2 392	1 262	603
<b>Months</b>							
Aug 94	20	14	34	—	165	90	50
Sep 94	21	17	38	—	199	168	47
Oct 94	23	15	38	—	214	163	48
Nov 94	25	16	41	—	196	83	53
Dec 94	26	20	46	—	231	122	49
Jan 95	20	17	37	—	220	91	43
Feb 95	19	17	36	—	217	114	46
Mar 95	23	17	41	—	242	117	53
Apr 95	14	15	29	—	192	98	51
May 95	18	15	33	—	198	96	56
Jun 95	18	10	29	—	145	62	58
Jul 95	17	12	29	—	145	54	53
Aug 95	19	15	34	—	191	92	52
Sep 95	n.y.a.	n.y.a.	n.a.	—	n.y.a.	n.y.a.	n.y.a.

Reference: Livestock Products (7215.0)

**6.2 MEAT PRODUCED**

Period	Beef	Veal	Mutton	Lamb	Pigmeat
tonnes					
<b>Financial years</b>					
1992-93	100 196	303	76 921	23 395	33 562
1993-94	101 513	296	61 731	24 936	32 423
1994-95p	96 920	285	47 002	19 250	36 914
<b>Months</b>					
Aug 94	7 592	31	3 260	1 408	2 956
Sep 94	8 459	31	4 029	2 589	2 846
Oct 94	8 764	22	4 042	2 499	2 882
Nov 94	9 348	23	3 849	1 220	2 990
Dec 94	10 569	26	4 777	1 866	3 113
Jan 95	8 421	33	4 344	1 437	2 500
Feb 95	8 270	22	4 273	1 834	2 580
Mar 95	9 373	25	4 740	1 717	3 233
Apr 95	6 501	17	3 633	1 480	3 372
May 95	7 332	16	3 880	1 410	3 713
Jun 95	6 179	14	2 891	856	3 835
Jul 95	6 130	17	2 843	925	3 288
Aug 95	7 515	19	3 822	1 609	3 227
Sep 95	n.y.a.	n.y.a.	n.y.a.	n.y.a.	n.y.a.

Reference: Livestock Products (7215.0)

**Analysis of Table 6.2**

Numbers of lambs are declining due to uncertainty regarding future markets.

For more information regarding these tables, please contact Peter Hodgson on (09) 360 5180.

## 6.3 WOOL RECEIVALS<sup>1</sup> and LIVE SHEEP EXPORTS

Period	Receipts of taxable wool by brokers and dealers		Export of live sheep		
	bales	tonnes	Number '000	Gross Value \$'000	Unit Value \$
<b>Financial years</b>					
1992-93	1 115 307	198 756	3 681.0	89 079	24.20
1993-94	1 196 990	212 670	4 520.9	127 448	28.19 r
1994-95 r	972 837	172 575	3 780.7 r	125 101 r	33.09 r
<b>Months</b>					
Aug 94	138 948	24 758	218.7	7 186	32.86
Sep 94	164 715	29 327	235.3	7 649	32.51
Oct 94	126 445	22 185	312.9	9 410	30.07
Nov 94	87 127	12 097	347.7	9 578	27.55
Dec 94	31 807	5 522	284.9	9 517	33.40
Jan 95	59 841	10 640	376.4	12 608	33.49
Feb 95	84 274	15 167	345.2	11 816	34.23
Mar 95	90 219	16 114	336.7	11 016	32.72
Apr 95 r	53 151	9 478	496.7	17 622 r	35.49 r
May 95	39 129	6 883	282.1	10 428	36.97
Jun 95	30 142	5 333	179.3 r	6 855 r	38.22 r
Jul 95	50 743 r	9 033	515.6 r	21 397 r	41.50 r
Aug 95	125 248 r	22 415 r	337.3 r	14 105 r	41.81 r
Sep 95	112 523	19 952	327.3	12 729	38.89

<sup>1</sup> Source: National Council of Wool Selling Brokers

Reference: FTRACCS Trade Statistics

For more information regarding these tables, please contact Pam Prince on (09) 360 5207

## 6.4 ENERGY PRODUCTION

Period	Coal <sup>1</sup>	Electricity generated	Gas for distribution <sup>2</sup>	Crude oil <sup>3,4</sup>	Natural gas <sup>4</sup>
	'000 tonnes	million kWh	million MJ	mega-litres	million m <sup>3</sup>
<b>Financial years</b>					
1991-92	5 491	14 626	149 534	7 350	10 496
1992-93	5 428	15 007	156 349	6 693	11 923
1993-94	5 151	15 755	172 432	7 639	13 659
<b>Months</b>					
Sep 94	485	1 302	16 286	3 117	4 086
Oct 94	467	1 330	17 189		
Nov 94	508	1 392	15 936		
Dec 94	517	1 472	9 462	3 275	3 898
Jan 95	468	1 511	11 057		
Feb 95	503	1 387	12 900		
Mar 95	555	1 465	13 878	2 918	4 048
Apr 95	580	1 351	13 951		
May 95	518	1 423	14 466		
Jun 95	547	1 389	14 865 r	3 210	3 682
Jul 95	391	1 447	15 564		
Aug 95	368	1 455	15 474		
Sep 95	567	1 370	14 543	n.y.a.	n.y.a.

<sup>1</sup> Source: Department of Mines.

<sup>2</sup> Available for issue through mains.

<sup>3</sup> Includes condensate.

<sup>4</sup> Source: Australian Bureau of Agricultural and Resource Economics.

**Analysis of Table 6.5**

During the March 1995 quarter exploration for gold decreased by 18.4% and expenditure on diamond exploration fell by 45.7%.

**6.5 MINERAL EXPLORATION:  
EXPENDITURE BY TYPE OF MINERAL SOUGHT**

Period	Metallic Minerals			Non-Metallic Minerals		Total minerals
	Base metals <sup>1</sup>	Gold	Other	Diamonds	Other	
(\$ million)						
<b>Financial years</b>						
1991-92	43.9	208.5	51.7	25.1	2.8	<b>331.9</b>
1992-93	60.0	221.2	35.0	29.0	2.9	<b>348.1</b>
1993-94	63.3	310.2	31.5	46.6	2.1	<b>453.7</b>
<b>Quarters</b>						
Mar 94	12.1	76.4	5.0	7.1	0.4	<b>100.9</b>
Jun 94	15.9	90.2	4.2	12.6	0.6	<b>123.4</b>
Sept 94	13.0	94.3	5.5	14.0	0.7	<b>127.5</b>
Dec 94	14.5	97.4	4.9	9.4	0.3	<b>126.4</b>
Mar 95	17.2	79.5	3.4	5.1	0.6	<b>106.3</b>
June 95	14.1	108.2	4.0	5.8	0.6	<b>135.3</b>

<sup>1</sup> Includes copper, lead, zinc, silver, nickel and cobalt.

Reference: Actual and Expected Private Mineral Exploration Expenditure, Australia (8412.0)

**Analysis of Table 6.6**

During the March 1995 quarter, mineral production of gold and iron ore showed a decrease of 7% and 11%.

**6.6 MINERAL PRODUCTION**

Period	Iron ore	Bauxite	Gold	Ilmenite	Nickel	Diamonds
	'000 tonnes	'000 tonnes	kg	'000 tonnes	'000 tonnes	'000 carats
<b>Financial years</b>						
1991-92	111 643	25 290	182 043	1 445	52	41424
1992-93	112 259	26 681	179 615	1 706	64	42 199
1993-94	119 689	27 087	193 599	1 612	70	39 909
<b>Quarters</b>						
Mar 94	27 199	6 903	47 931	402	16	11 355
Jun 94	31 324	6 719	49 665	403	19	8 279
Sep 94	32 781	6 706	47 095	410	20	12 864
Dec 94	32 958	6 761	47 789	386	25	11 292
Mar 95	32 265	6 657	45 395	383	25	10 195
Jun 95	34 739	6 729	47 521	350	30	9 324

Source: Australian Bureau of Agricultural and Resource Economics

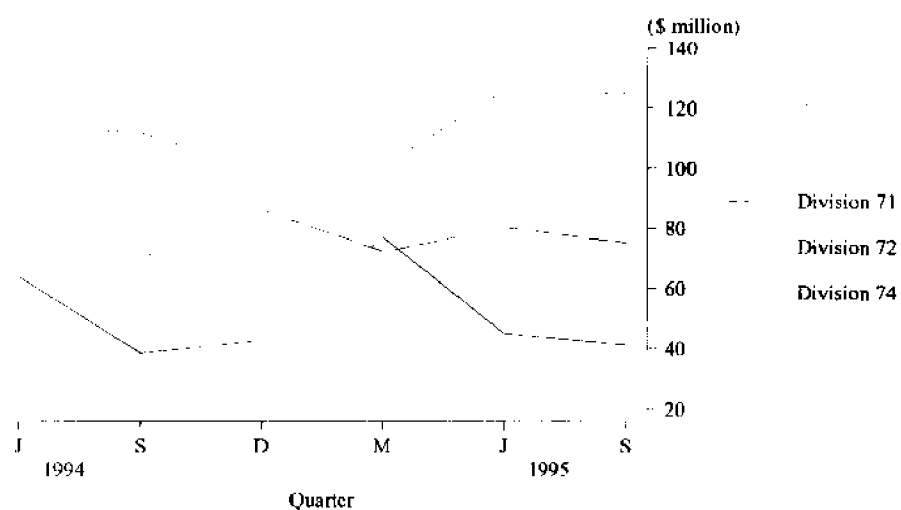
For more information regarding these tables, please contact Pam Prince on (09) 360 52067.

## 7.1 IMPORTS BY SELECTED DIVISION

Period	33 Petroleum, petroleum products, etc.	71 Power generating equipment and machinery	72 Machinery specialised for particular industries	74 General industrial machinery and equipment	78 Road vehicles
	(\$ million)				
<b>Financial years</b>					
1992-93	912.0	172.0	650.2	215.2	538.3
1993-94	678.4	189.7	432.2	254.0	690.0
1994-95	823.8	203.1	436.9	308.7	802.1
<b>Quarters</b>					
Jun 94	151.0	63.8	113.8	52.2	183.1
Sep 94	207.9	38.4	111.6	70.1	168.8
Dec 94	176.0	42.7	98.7	85.9	223.5
Mar 95	187.8	77.0	100.8	72.3	158.1
Jun 95	252.1	45.0	125.8	80.4	251.6
Sep 95	185.3	41.4	124.7	75.2	212.6

Reference: FTRACCS Trade Statistics

### IMPORTS BY SELECTED DIVISIONS



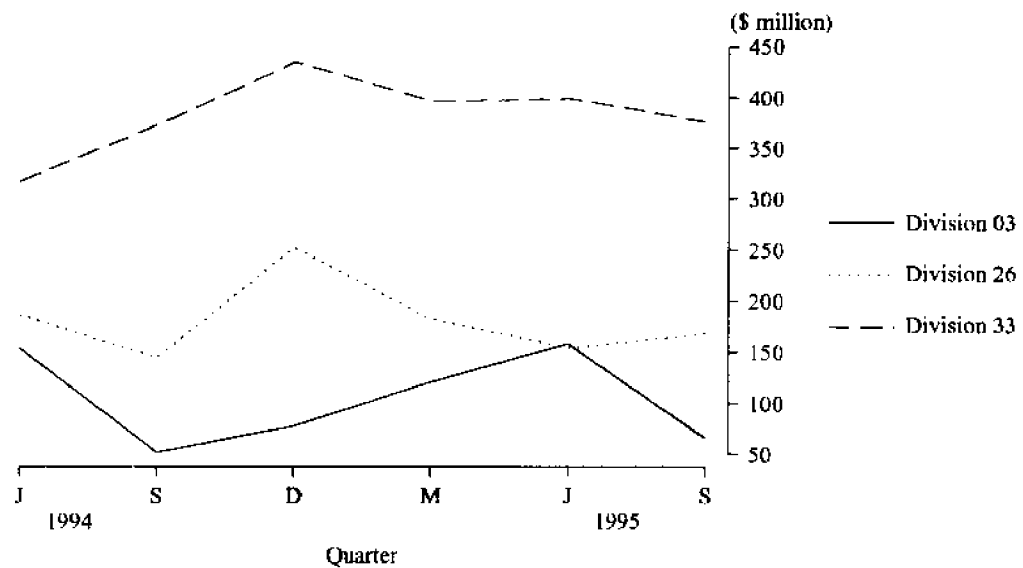
Source: FTRACCS Trade Statistics

## 7.2 EXPORTS BY SELECTED DIVISIONS

Period	03 Fish, crustaceans, molluscs, etc	04 Cereals and cereal preparations	26 Textile fibres and waste (excluding yam or fabric)	28 Metaliferous ores and metal scrap	33 Petroleum, products etc.
	(\$ million)				
<b>Financial years</b>					
1992-93	359.0	1 294.9	611.4	3 261.1	967.0
1993-94	413.3	1 150.1	656.1	2 999.4	882.9
1994-95	408.6	1 154.3	733.8	3 094.0	1 544.4
<b>Quarters</b>					
Jun 94	154.7	264.0	187.1	717.0	317.0
Sep 94	51.9	255.5	144.5	723.2	372.3
Dec 94	77.4	292.0	252.6	727.9	434.2
Mar 95	120.7	323.4	182.0	752.4	396.4
Jun 95	158.7	283.4	154.1	890.6 r	398.8 r
Sep 95	66.1	286.5	168.3	826.9	376.0

Reference: FTRACCS Trade Statistics

### EXPORTS BY SELECTED DIVISIONS



Source: FTRACCS Trade Statistics

## Analysis of Table 8.1

New Motor Vehicle registrations showed a decrease in all body types for the month of September 1995.

For more information regarding these tables, please contact Cheryl Smith on (09) 360 5242

8.1 NEW MOTOR VEHICLE REGISTRATIONS<sup>1</sup>

Period	Western Australia				Total	Perth Statistical Division
	Passenger vehicles	Light commercial vehicles	Trucks and buses	Motor cycles and scooters		
<b>Financial years</b>						
1992-93	45 567	9 581	1 975	2 117	59 240	46 593
1993-94	48 589	10 350	2 136	2 103	63 178	49 074
1994-95	51 947	10 782	2 170	2 344	67 243	52 168
<b>Months</b>						
Aug 94	4 350	759	161	292	5 499	4 346
Sep 94	4 317	773	155	191	5 436	4 364
Oct 94	4 379	795	184	223	5 581	4 415
Nov 94	4 659	1 071	199	257	6 186	4 763
Dec 94	4 353	835	191	260	5 639	4 469
Jan 95	4 047	803	166	207	5 223	3 950
Feb 95	3 933	906	171	176	5 189	3 989
Mar 95	4 434	1 006	153	217	5 810	4 597
Apr 95	3 400	785	173	150	4 508	3 332
May 95	5 046	1 076	205	173	6 500	5 040
Jun 95	5 025	1 258	248	159	6 690	4 984
Jul 95	3 704	769	198	156	4 827	3 635
Aug 95	4 395	771	235	192	5 593	4 405
Sep 95	4 021	738	209	187	5 155	4 119

<sup>1</sup> Excludes plant and equipment, caravans and trailers

Reference: Unpublished statistics

8.2 VEHICLE REGISTRATION STATISTICS<sup>1</sup>

Period	Passenger Vehicles		Other Vehicles		Total	
	Original	Trend estimate	Original	Trend estimate	Original	Trend estimate
	<b>Months</b>					
Aug 94	4 350	4 223	920	998	5 270	5 221
Sep 94	4 317	4 279	928	1 017	5 245	5 296
Oct 94	4 379	4 329	979	1 044	5 358	5 373
Nov 94	4 659	4 343	1 270	1 069	5 929	5 412
Dec 94	4 353	4 322	1 026	1 080 r	5 379	5 402 r
Jan 95	4 047	4 299	969	1 081 r	5 016	5 380 r
Feb 95	3 933	4 304	1 077	1 080 r	5 010	5 387
Mar 95	4 434	4 336 r	1 159	1 085 r	5 593	5 421 r
Apr 95	3 400	4 374 r	958	1 096 r	4 358	5 470 r
May 95	5 046	4 383 r	1 281	1 110 r	6 327	5 493 r
Jun 95	5 025	4 349 r	1 270	1 117 r	6 531	5 466 r
Jul 95	3 704	4 282 r	967	11 213 r	4 671	5 395 r
Aug 95	4 395	4 203 r	1 006	1 102 r	5 401	5 305 r
Sep 95	4 021	4 123	947	1 085	5 968	5 208

<sup>1</sup> Other vehicles excludes motor cycles, plant and equipment, caravans and trailers.

Reference: Unpublished statistics

## 9.1 PRIVATE NEW CAPITAL EXPENDITURE BY SELECTED INDUSTRY GROUPS (ORIGINAL SERIES)

Period	Selected industry			Total	
	Mining	Manu- facturing	Other selected industries	Original	Seasonally adjusted
	(\$ million)				
<b>Financial Years</b>					
1993-94	3 619	529	1 823	5 972	5 957
1994-95	3 898	603	2 449	6 951	6 964
<b>Quarters</b>					
Mar 94	748	106	360	1 213	1 265
Jun 94	897	131	581	1 609	1 717
Sep 94	766	122	421	1 309	1 303
Dec 94	1 118	156	918	2 192	2 020
Mar 95	982 r	141 r	500 r	1 623 r	1 692 r
Jun 95	1 032	184	610	1 826	1 950

Reference: State Estimates of Private New Capital Expenditure (5646.0)

### Analysis of Table 9.2

After moderate growth in the first two quarters of 1994-95, GSP increased 1.6% and 1.9% in March and June quarters 1995, respectively. The rate of growth in wages, salaries and supplements has increased since September quarter 1994, with a rise of 2.2% in this aggregate in June Quarter 1995. Indirect taxes less subsidies increased 0.9% in June quarter, following two quarters during which little growth was recorded.

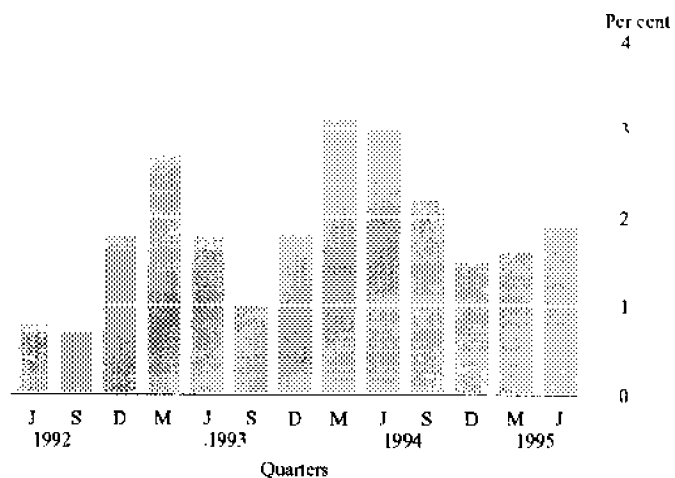
For more information about this table, call Vic Nowotny (09) 360 5333

## 9.2 STATE FINAL DEMAND AND PRODUCTION ACCOUNT TREND DATA AT CURRENT PRICES

Period	Wages salaries and supplements	Gross operating surplus	Indirect taxes less subsidies	GSP (income based)
	(\$ million)			
<b>Quarters</b>				
Dec 92	4 516	4 777	1 068	10 361
Mar 93	4 613	4 916	1 080	10 609
Jun 93	4 763	4 915	1 111	10 789
Sep 93	4 903	4 848	1 139	10 890
Dec 93	5 001	4 845	1 180	11 026
Mar 94	5 058	4 997	1 241	11 296
Jun 94	5 095	5 184	1 308	11 587
Sep 94	5 129	5 280	1 342	11 751
Dec 94	5 198	5 314	1 346	11 858
Mar 95	5 304	5 392	1 349	12 045
Jun 95	5 423	5 486	1 361	12 270

Reference: State Accounts (5242.0)

### PERCENTAGE CHANGE IN GSP(A) - TREND WESTERN AUSTRALIA



(A) Gross State Product at current prices  
Source: State Accounts 5242.0

# 10.1 STATISTICAL SUMMARY

Indicator	Period	Unit	Western Australia				Change from One year ago (%)
			Current Australian figure	Current figure	Change from last period(%)	Figure one year ago	
<b>POPULATION</b>							
Estimated resident population	Jun qtr 94	'000	17 843.3	1 701.9	0.4	1 676	1.5
Natural increase	Jun qtr 94	No.	35 358	3 940	-1.1	3 778	4.3
Net estimated migration gain	Jun qtr 94	No.	5 576	2 321	-46.9	394	589.1
<b>TOURISM</b>							
<i>Hotels and motels, etc with facilities</i>							
Guest arrivals	Jun qtr 95	'000	7 301.7	521.1	-1.0	503.4	3.5
Guest rooms available	Jun qtr 95	No.	167 752	14 754	0.1	14 754	0.0
Room occupancy rates	Jun qtr 95	%	56.1	57.4	-3.0	54.7	4.9
<i>Overseas visitors</i>							
Long-term Arrivals	Jun qtr 95	No.	12 400	1 310	-66.5	1 150	13.9
Short-term Arrivals	Jun qtr 95	No.	800 400	74 200	-13.3	65 800	12.8
<i>Resident Departures</i>							
Long-term Departures	Jun qtr 95	No.	16 100	1 830	-23.4	1 880	2.7
Short-term Departures	Jun qtr 95	No.	645 700	70 600	16.7	69 800	1.1
<b>EMPLOYMENT</b>							
Employed persons (Trend)	Oct 95	'000	8 254.0	619.0	-0.1	596.8	3.7
<i>Unemployed persons</i>							
Looking for work (Original)	Oct 95	'000	738.9	61.8	-9.0	62.1	-0.5
Job vacancies	Aug 95	'000	62.0	4.9	-21.0	5.9	-16.9
<i>Participation rate</i>							
Original	Sep 95	%	64.2	66.9	-0.1	65.8	1.6
Trend	Sep 95	%	63.7	66.4	0.2	66.0	0.4
<i>Unemployment rate</i>							
Original	Sep 95	%	8.4	7.5	0.7	8.1	0.6
Trend	Sep 95	%	8.3	7.3	0.2	7.9	0.6
<i>Full-time average weekly earnings</i>							
Males	Aug 95	\$	746.90	776.20	1.6	734.70	5.7
Females	Aug 95	\$	593.00	568.70	2.0	528.10	7.7
Persons	Aug 95	\$	691.20	702.90	1.6	656.90	7.0
All employees total earnings	Aug 95	\$	547.80	544.40	0.8	516.20	5.5
<i>Average weekly overtime hours</i>							
Per employee	Aug 95	hours	1.1	1.3	5.5	1.4	-9.3
Per employee working overtime	Aug 95	hours	6.8	8.0	-1.1	8.1	-1.8
Employees working overtime	Aug 95	%	16.0	16.1	6.6	17.4	-7.6
<i>Industrial disputes in progress (working days lost)</i>							
Total	Jul 95	'000	35.9	4.7	51.6	4.1	14.6
Per '000 employees year ended	Jul 95	days	83.0	54.0	12.5	41.0	31.7
<b>RETAIL</b>							
<i>Monthly Retail Turnover</i>							
Original	Sep 95	\$m	9 603.9	987.5	0.9	927.4	6.5
Trend estimate	Sep 95	\$m	9 924.8	1 012.4	1.0	945.2	7.1
Consumer Price Index	Sep 95	Index No.	117.6	115.6	0.6	110.1	5.0



# 10.1 STATISTICAL SUMMARY continued

## Western Australia

Indicator	Period	Unit	Current Australian figure	Current figure	Change from last period (%)	Figure one year ago	Change from One year ago (%)
<b>CONSTRUCTION</b>							
<i>Building Approvals</i>							
Dwelling Units	Sep 95	No.	11 068	1 410	-11.7	2 445	-42.3
Value of all building	Sep 95	\$m	2 147.2	217.4	7.3	258.7	-16.0
<i>Building Commencements</i>							
Dwelling Units	Jun qtr 95	No.	35 647	4 642	-5.1	6 744	-31.2
Value of all building	Jun qtr 95	\$m	6 040.6	653.2	5.8	731.4	-10.7
<i>Total Building</i>							
Value of work done during	Jun qtr 95	\$m	5 995.1	669.7	-3.8	750.9	-10.8
Value of work yet to be done	Jun qtr 95	\$m	7 916.6	642.2	-0.7	734.9	-12.6
<i>Engineering Construction</i>							
Value of work commenced	Mar qtr 95	\$m	2 840.8	566.3	42.9	349.5	62.0
Value of work done during	Mar qtr 95	\$m	3 019.3	372.8	-1.6	441.4	-15.6
Value of work yet to be done	Mar qtr 95	\$m	5 233.2	1 010.5	25.4	575.1	75.7
<i>Housing Price Indexes</i>							
Materials used in house building	Sep qtr 95	Index No.	116.6	114.3	0.9	110.2	3.7
Project Homes	Sep qtr 95	Index No.	108.7	100.8	0.4	98.8	2.0
Sales of established houses	Sep qtr 95	Index No.	112.4	109.7	0.5	106.4	3.1
<b>MINERAL EXPLORATION</b>							
Gold	Jun qtr 95	\$m	158.6	108.2	36.1	90.2	19.9
Other minerals	Jun qtr 95	\$m	86.0	27.1	1.1	33.2	-18.4
<b>OVERSEAS TRADE</b>							
Imports	Sep 95	\$m	6 283.5	496.2	0.7	419.0	18.4
Exports	Sep 95	\$m	5 826.4	1 624.1	17.2	1 224.6	32.6
<b>TRANSPORT</b>							
<i>Passenger vehicles registrations</i>							
Original	Sep 95	No.	41 329	4 021	-8.5	4 317	-6.8
Trend	Sep 95	No.	42 559	4 123	-2.6	4 279	-0.3
<i>Total registrations</i>							
Original	Sep 95	No.	49 266	4 968	-8.0	5 245	-5.3
Trend	Sep 95	No.	51 181	5 208	-2.8	5 296	-1.7
<b>FINANCE</b>							
<i>Private New Capital Expenditure</i>							
Original	Jun qtr 95	\$m	9 519	1 826	12.5	1 609	13.5
Seasonally adjusted	Jun qtr 95	\$m	9 387	1 950	15.2	1 717	13.6
<i>Gross State Product (Income based)</i>							
Current prices	Jun qtr 95	\$m	114 566	11 768	3.0	11 061	6.4
State Final Demand at average 1989-90 prices	Jun qtr 95	\$m	105 617	10 569	7.0	10 360	2.0



## For more information...

The ABS publishes a wide range of information on Australia's economic and social conditions. Details are available in the *Catalogue of Publications and Products* is available from any of our Offices (see below for contact details).

### Information Consultancy

Information tailored to special needs of clients or in-depth data investigations are provided by the ABS Information Consultancy Services in each of our Offices (available via the contacts below).

### National Dial-a-Statistic Line

0055 86 400

(Steadycam P/L premium rate 25c/21.4 secs.)

This number gives 24 hours access, 365 days a year for a range of statistics.

### Electronic Data Services

A growing range of our data is available on electronic media. Our Telestats service delivers major economic publications ready to download into your computer on the day of release. Our Ausstats service enables on-line access to a data base of thousands of up-to-date time series. Selected datasets are also available on diskette or CD-ROM. For more details on our electronic services, contact Information Services in any of our Offices on the numbers below.

### Bookshops and Subscriptions

There are now over 500 titles available from the ABS Bookshops in each of our Offices. The ABS also provides a subscription mailing service through which nominated publications are provided by mail at no additional cost. (Telephone Publications Subscription Service toll free on 008 02 0608 Australia wide).

### Sales and Inquiries

■ <b>Regional Offices</b>	<b>Information Enquiries</b>	<b>Bookshop Sales</b>
SYDNEY (02)	268 4611	268 4620
MELBOURNE (03)	615 7000	615 7829
BRISBANE (07)	222 6531	222 6350
PERTH (09)	360 5140	360 5140
ADELAIDE (08)	237 7100	237 7582
HOBART (002)	20 5800	20 5800
CANBERRA (06)	207 0326	207 0326
DARWIN (089)	43 2111	43 2111
■ <b>National Office</b>		
ACT (06)	252 6007	008 020 608



**Information Services, Exchange Plaza,  
2 The Esplanade, Perth WA 6000.  
or any ABS Office**



© Commonwealth of Australia 1995

Recommended retail price: \$12.00



213055001954  
ISSN 0727-2367